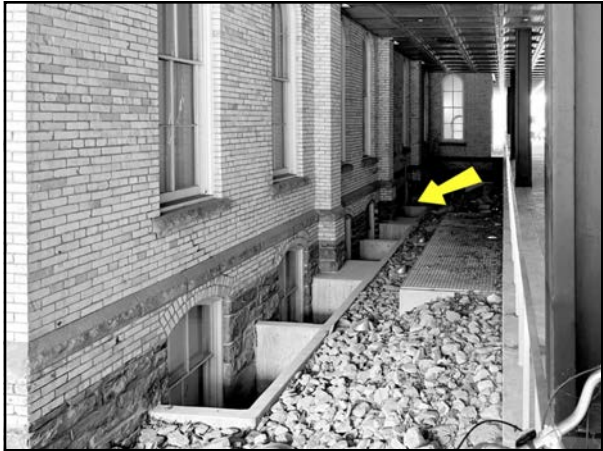


1



2



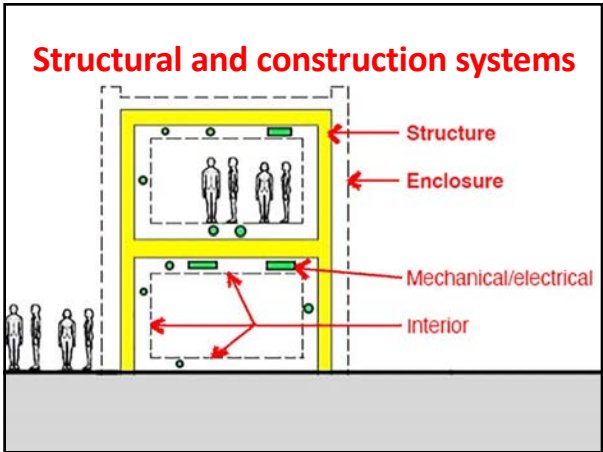
3



4



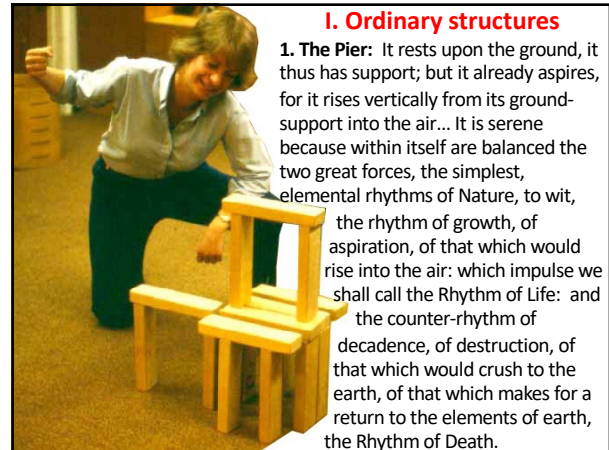
5



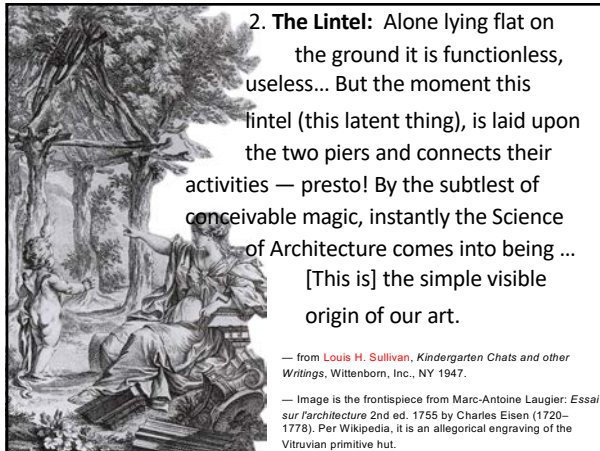
6

Structural systems

7



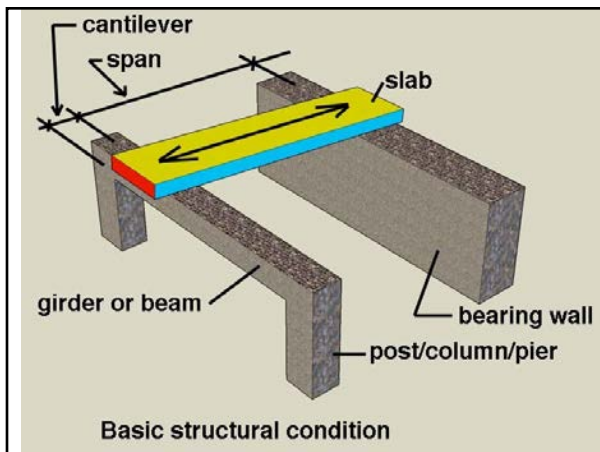
8



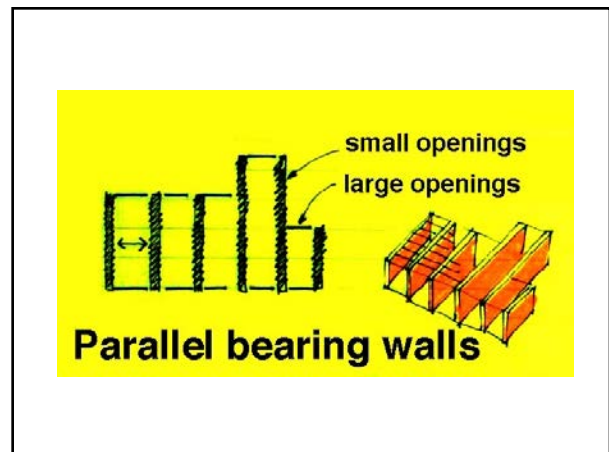
9



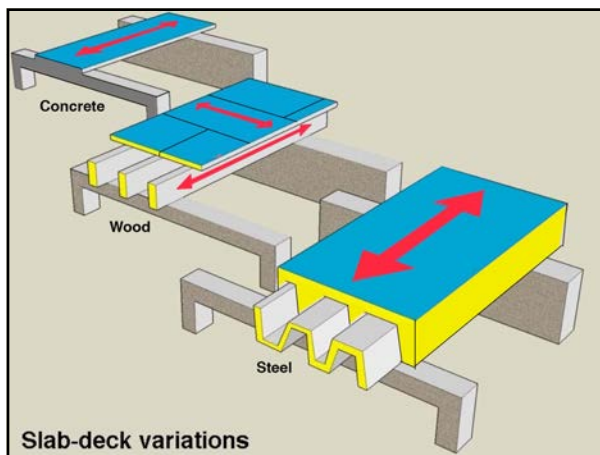
10



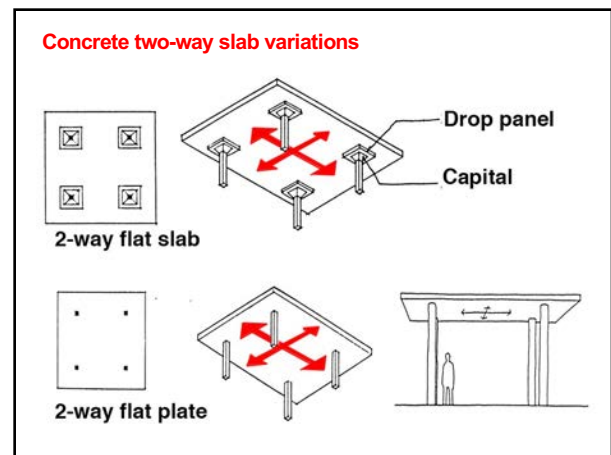
11



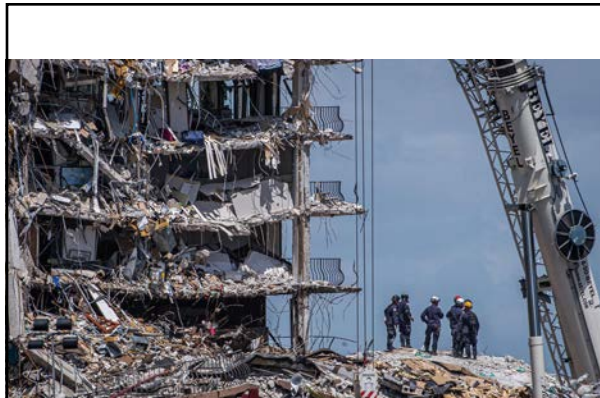
12



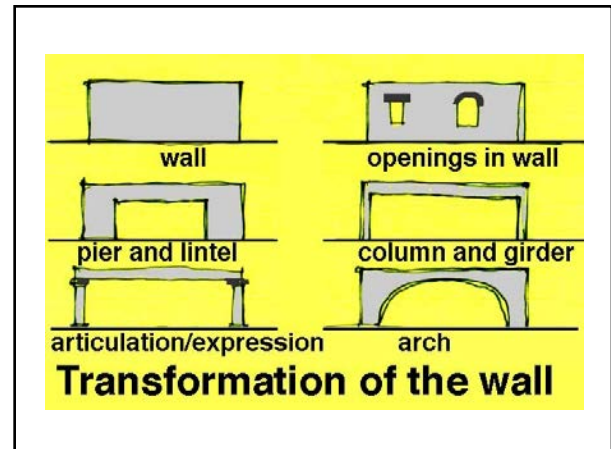
13



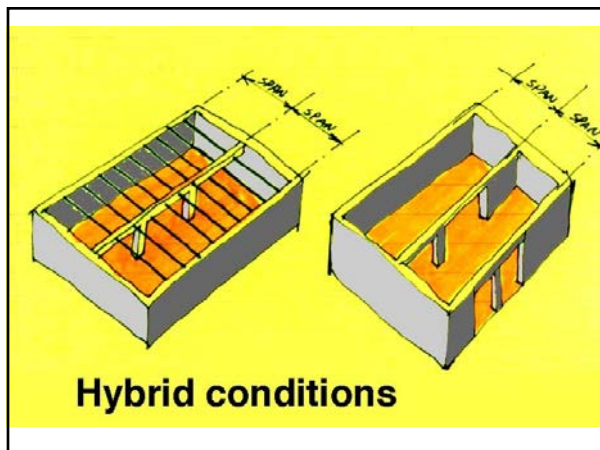
14



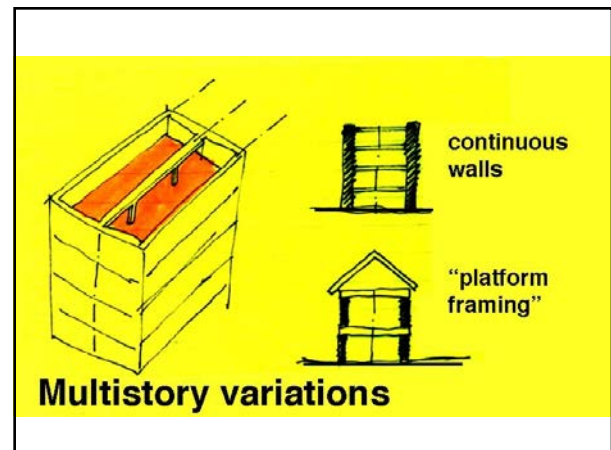
15



16



17



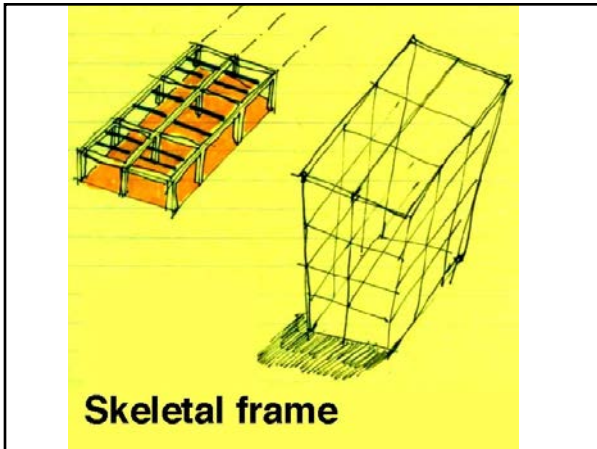
18



19



20



21



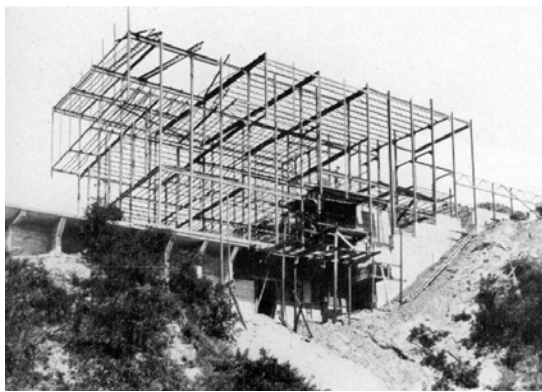
22



23



24



Richard Neutra, Lovell "Health" House, Los Angeles, 1929

25



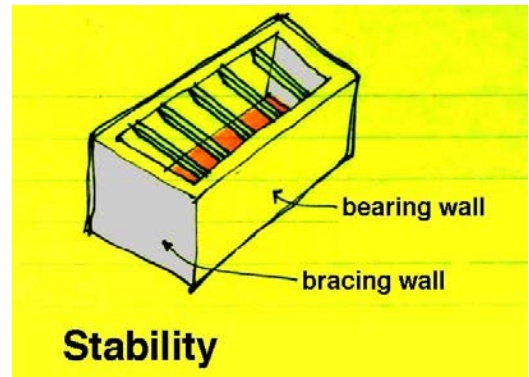
KSS Architects, addition to Statler Hall, Cornell University, 2004

26

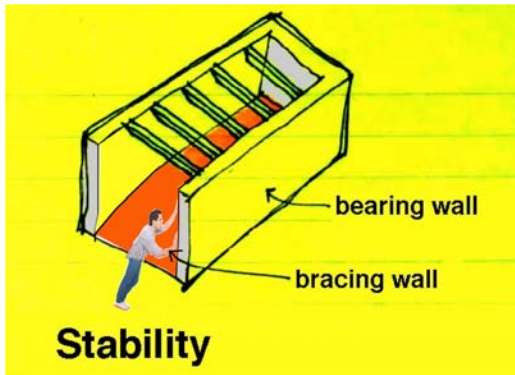


Timber frame, State Street, Ithaca, New York

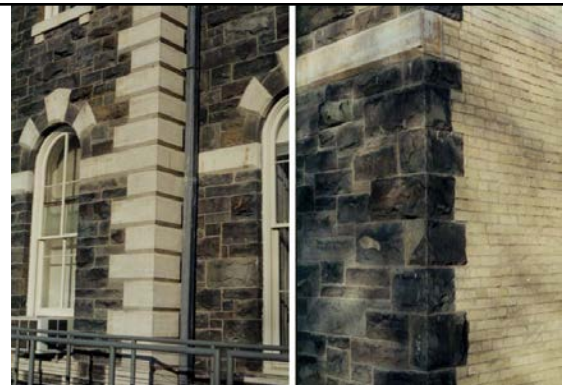
27



28

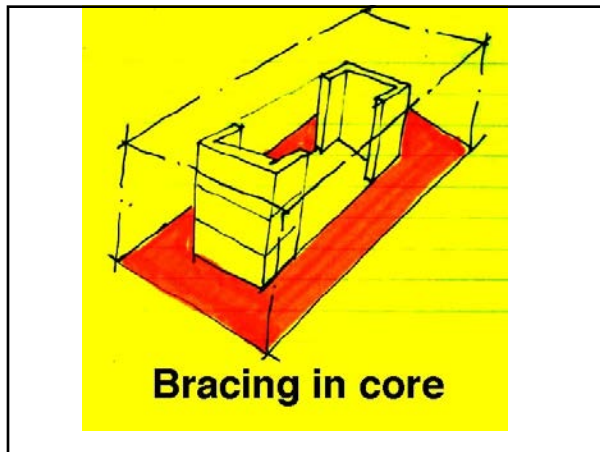


29

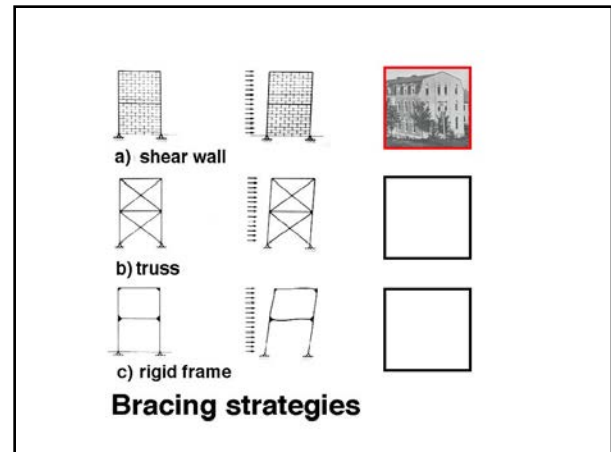


Charles Francis Osborne, East Sibley Hall, Cornell University, 1894

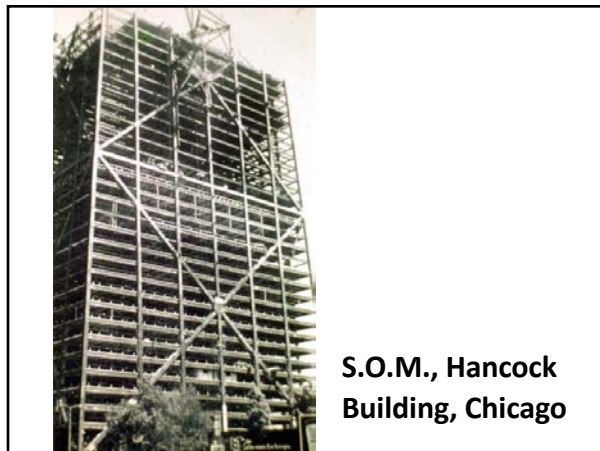
30



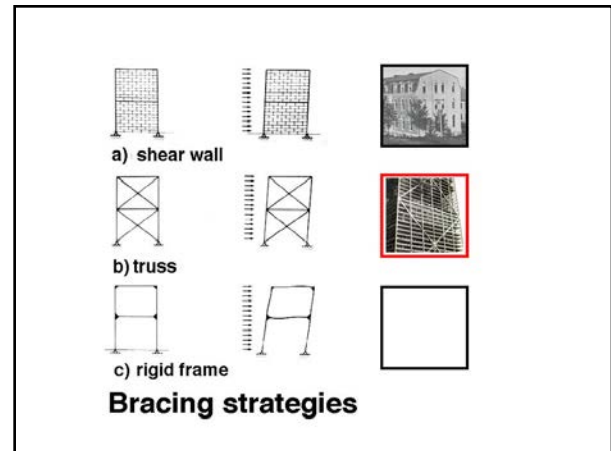
31



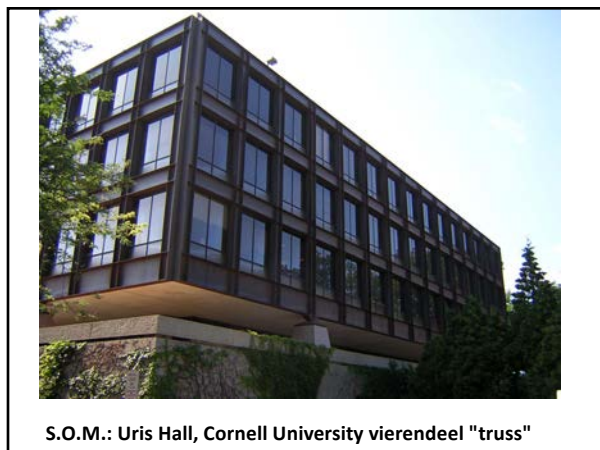
32



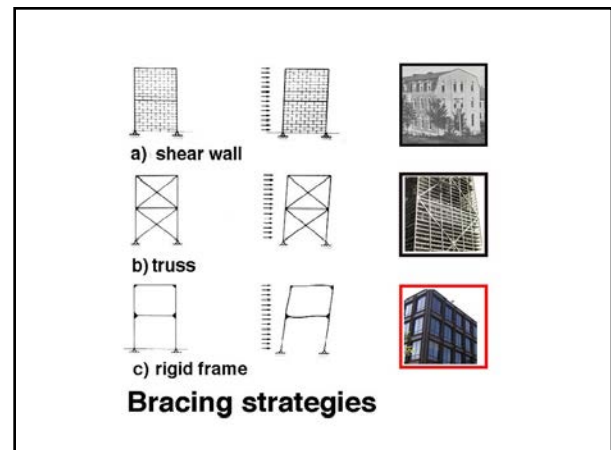
33



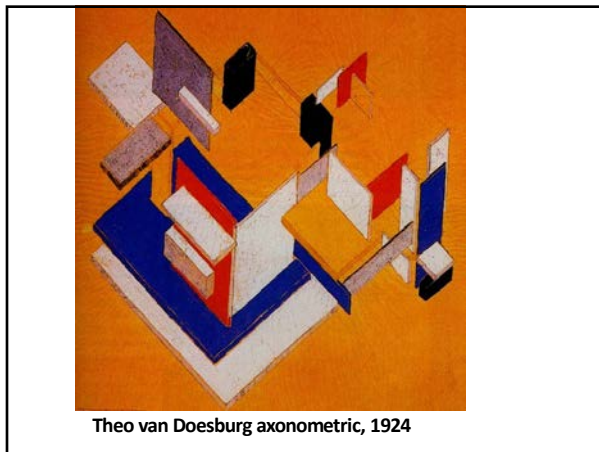
34



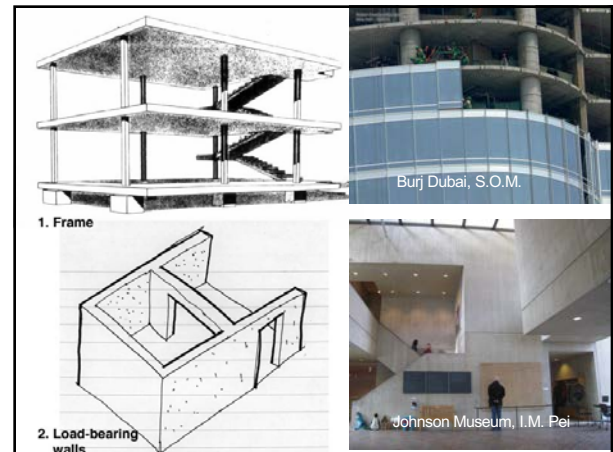
35



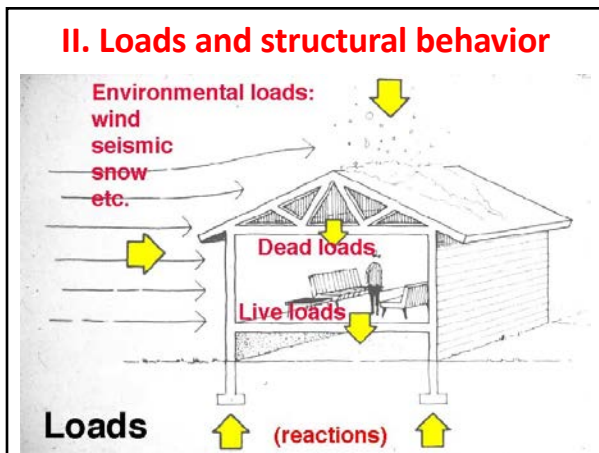
36



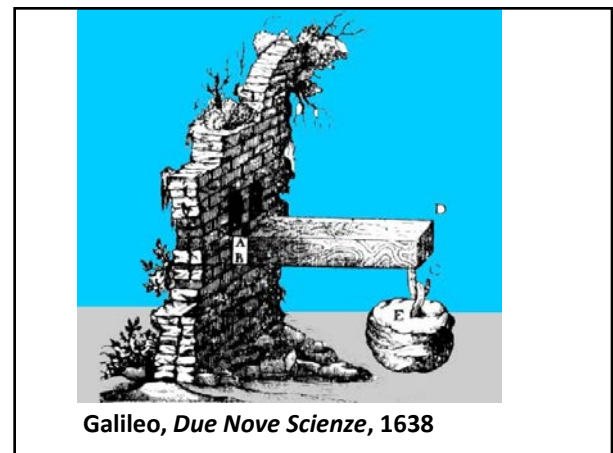
37



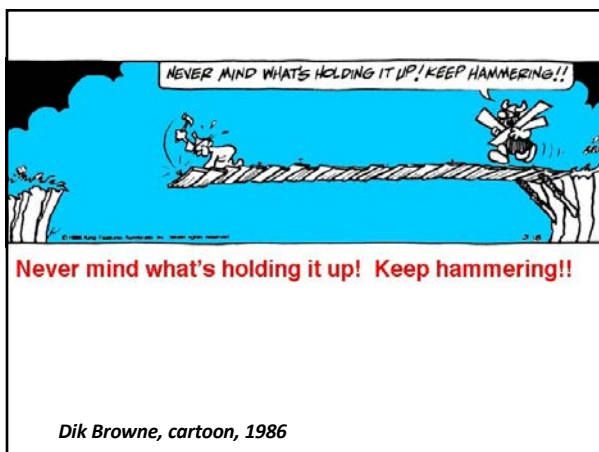
38



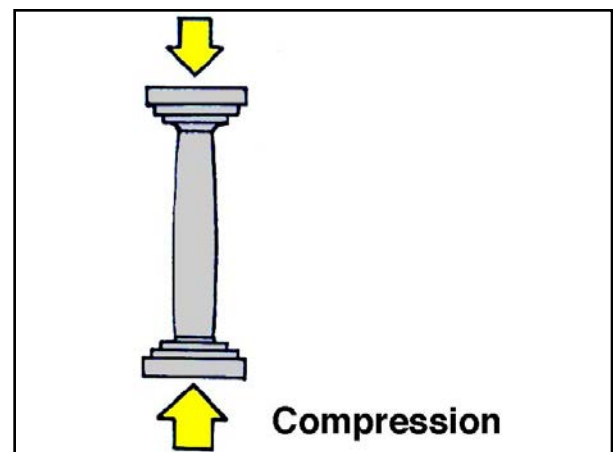
39



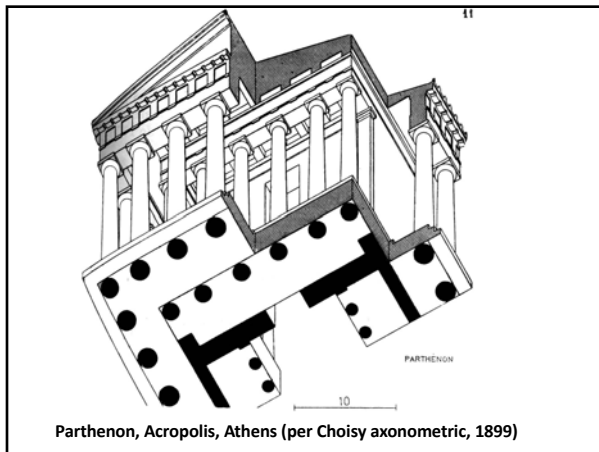
40



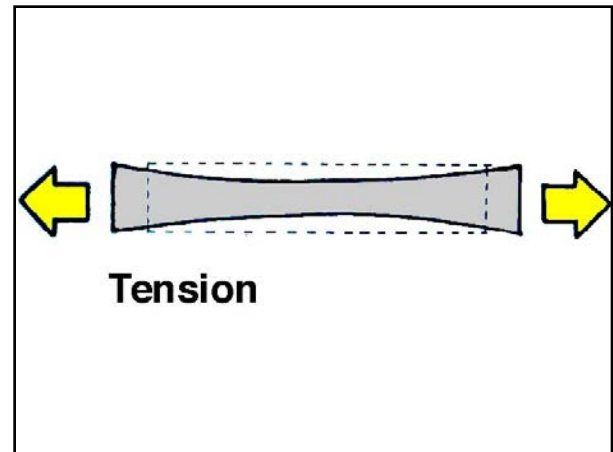
41



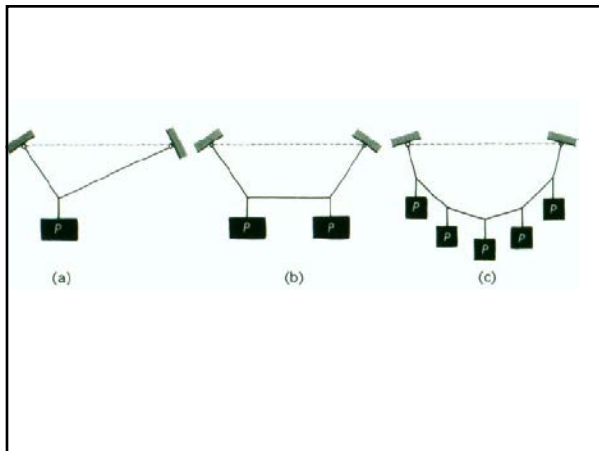
42



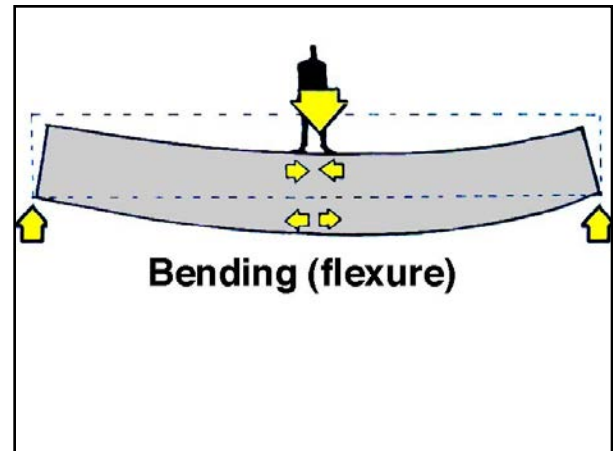
43



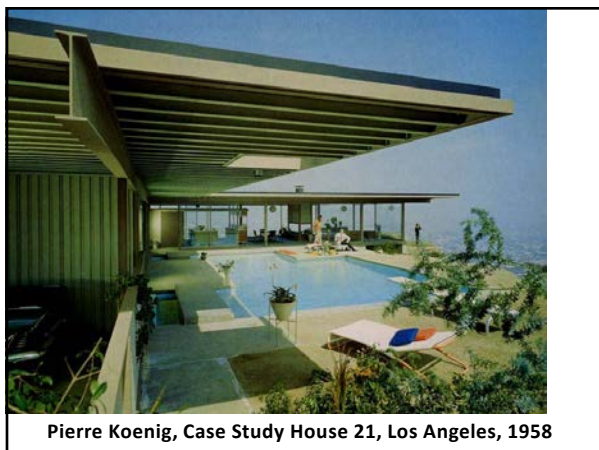
44



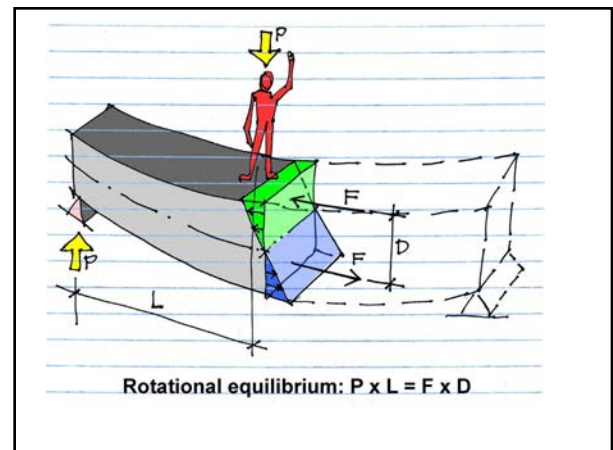
45



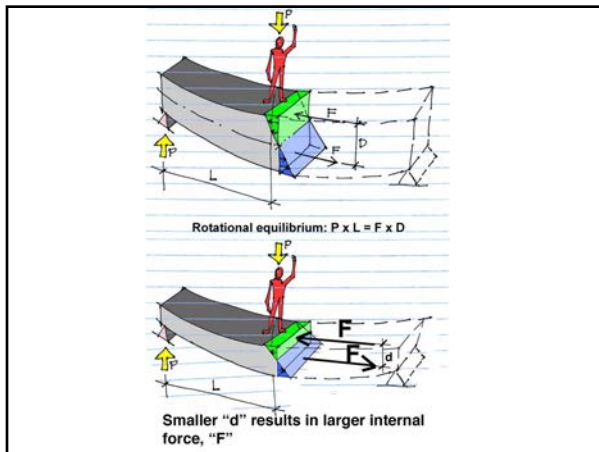
46



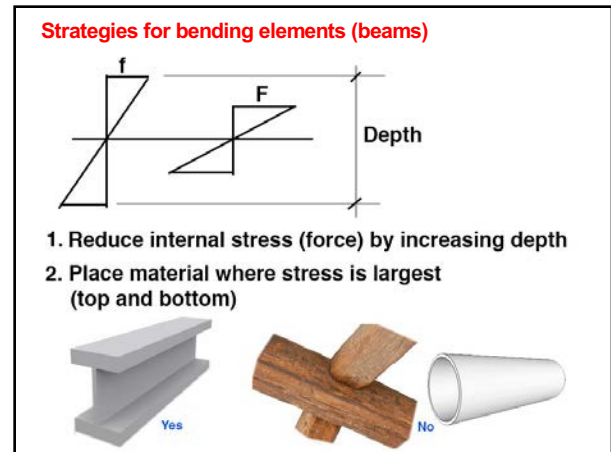
47



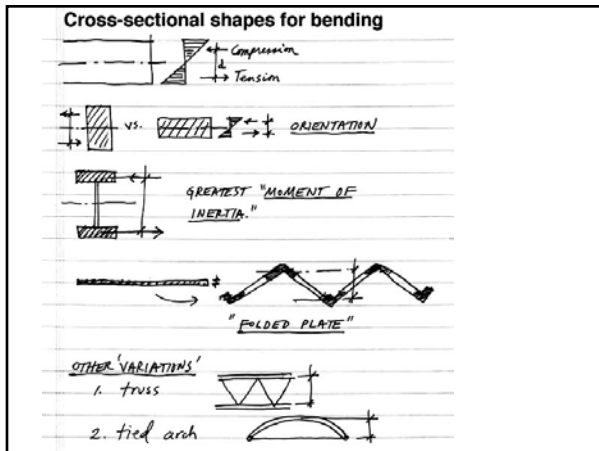
48



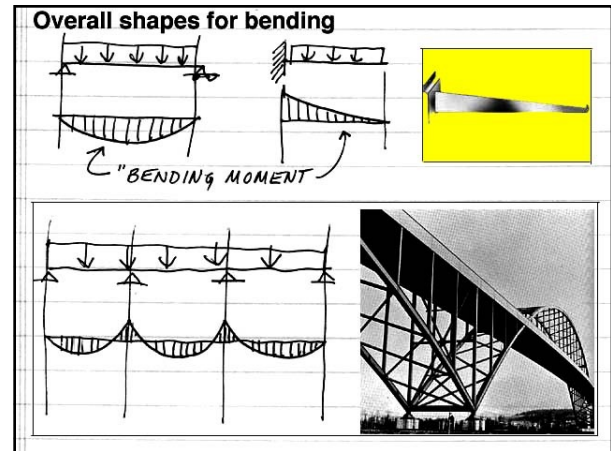
49



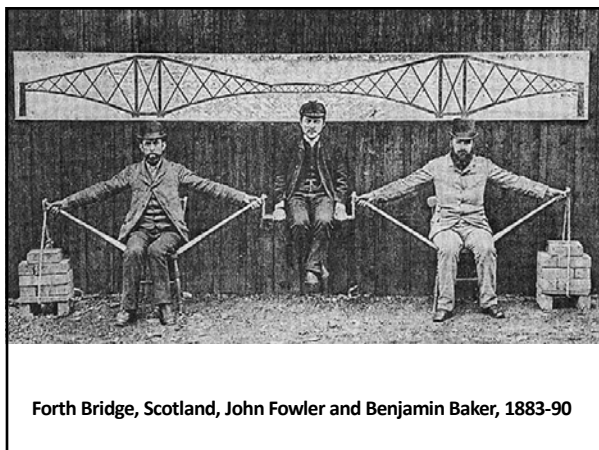
50



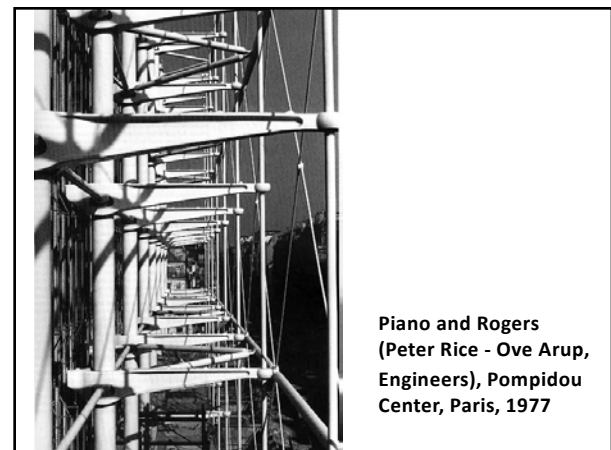
51



52



53



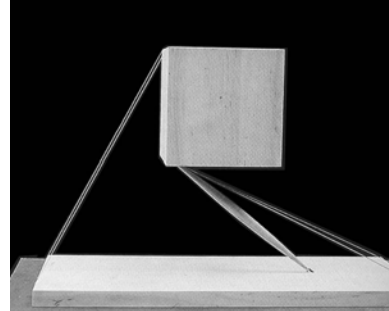
54



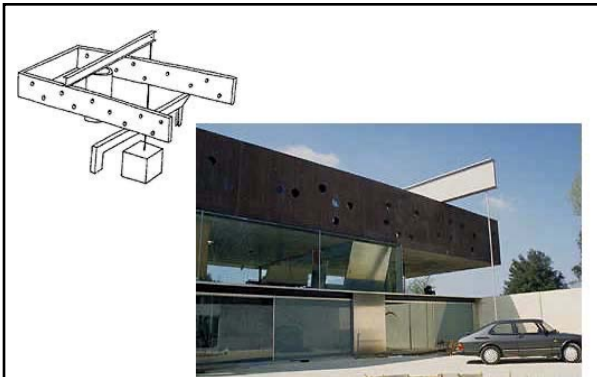
55

III. Axial force structures

Long-span, “funicular,” heroic structures

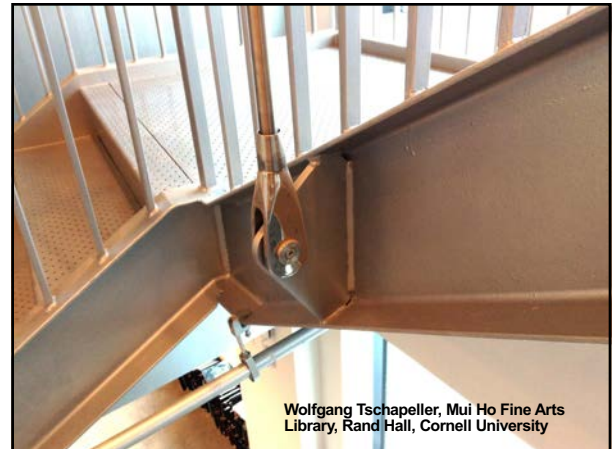


56



Koolhaas, Villa in Bordeaux (Balmond)

57



Wolfgang Tschapeller, Mui Ho Fine Arts Library, Rand Hall, Cornell University

58

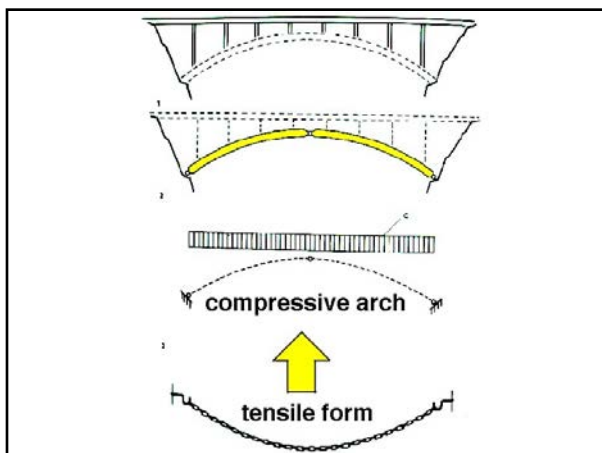


Grimshaw and Partners, Iguazu Headquarters and Factory, Cologne, 1992

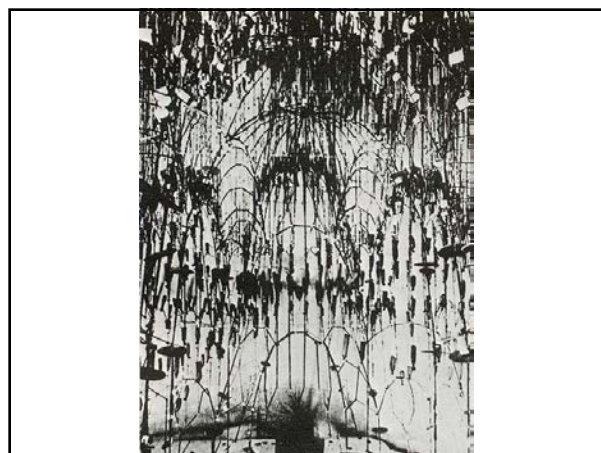
59



60



61



62



Gaudí, Cripta de la Colònia Güell, Barcelona, 1908–1914

63



64



65



Eero Saarinen, Gateway Arch, St. Louis, 1947 competition (1961–66)

66



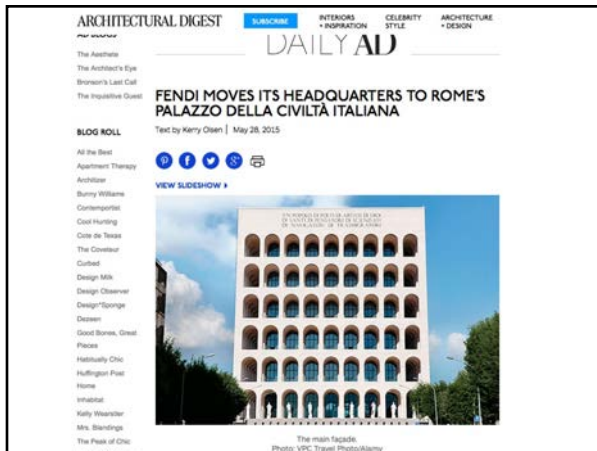
Auguste Perret, Esdors Factory, Paris, 1919

67



Guerrini, La padula and Romano: Palazzo della Civiltà Italiana, EUR (Rome), 1938

68

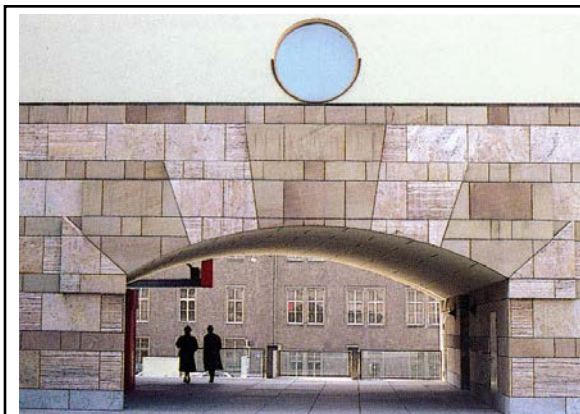


69



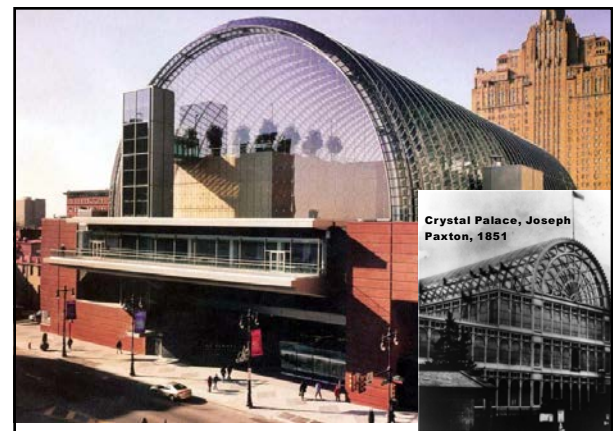
Mario Botta, House in Ticino, Switzerland, 1988

70



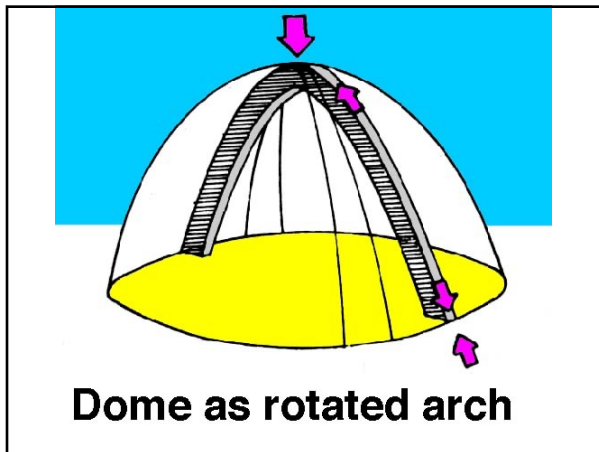
James Stirling, Staatsgalerie, Stuttgart, 1977-83

71

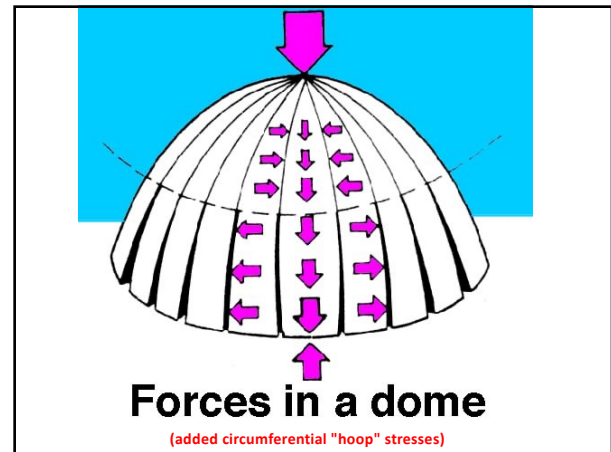


Viñoly, Kimmel Center, Philadelphia, 2001

72



73

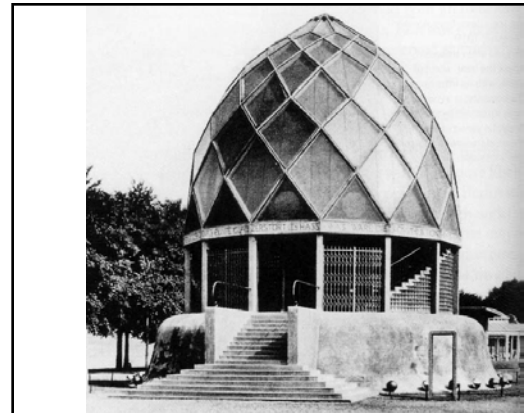


74



Pantheon, Rome,
126 A.D.

75



Bruno Taut, Glass Pavilion, Cologne, 1914

76



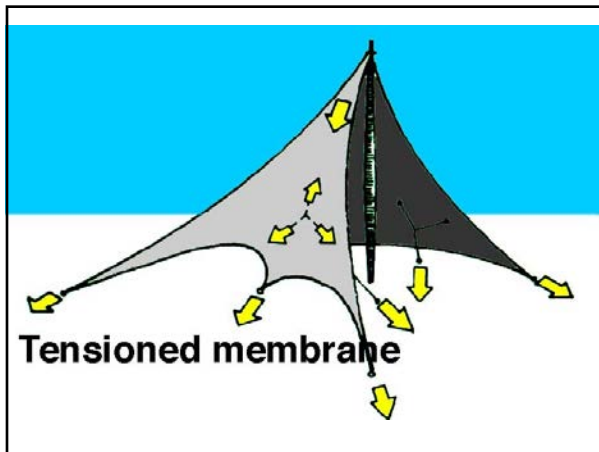
Buckminster Fuller, Geodesic dome (USA Pavilion, Expo 67, Montreal), 1967

77



Foster, Reichstag Dome, Berlin, 1999

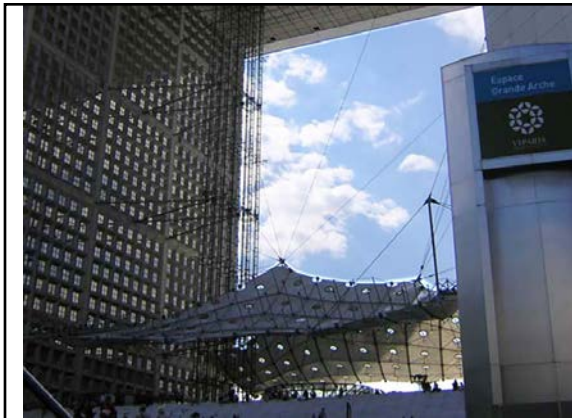
78



79

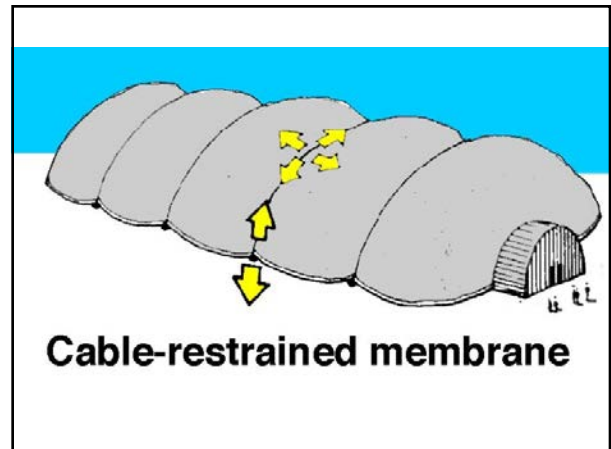


80

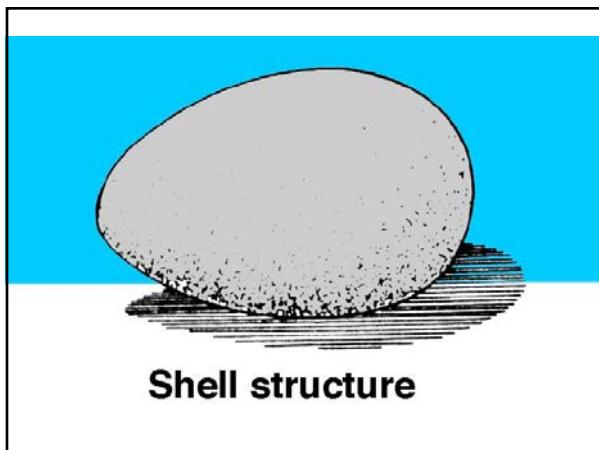


La Grande Arche, Johann Otto von Spreckelsen; La Défense, Paris (1989)

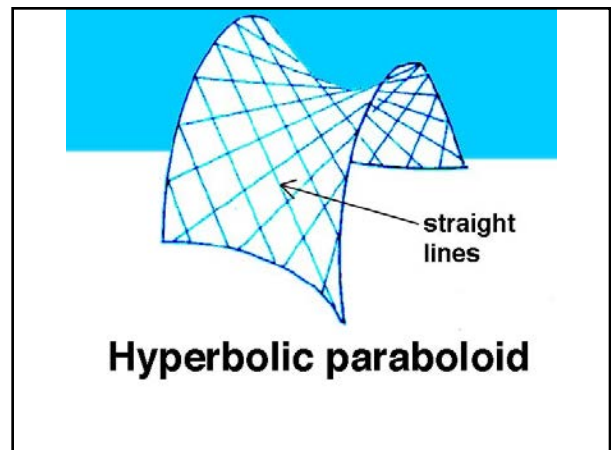
81



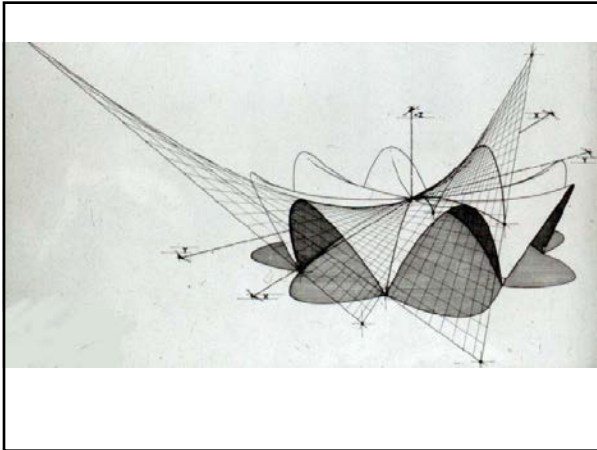
82



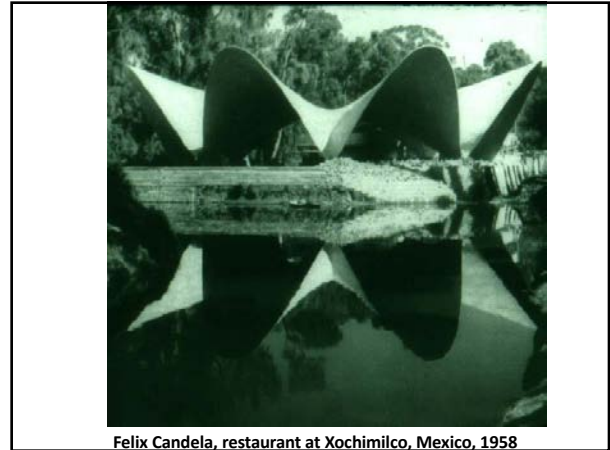
83



84



85



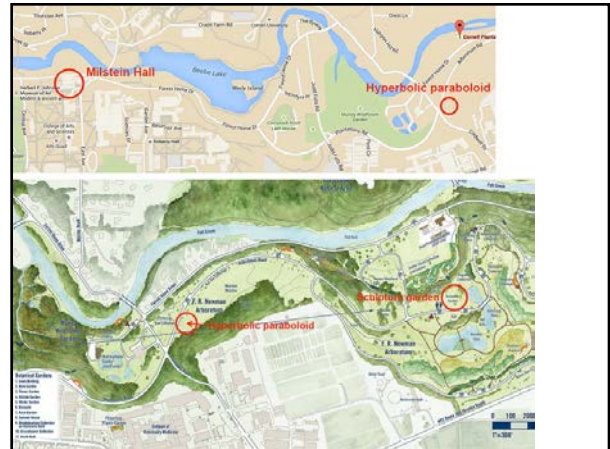
Felix Candela, restaurant at Xochimilco, Mexico, 1958

86

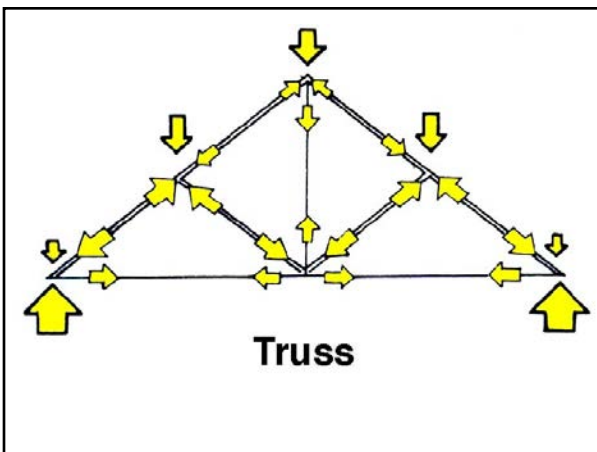


Don Greenberg, Hyperbolic paraboloid, Cornell University Plantations, late 1960s (rebranded as "Cornell Botanic Gardens" in October 2016)

87



88



89

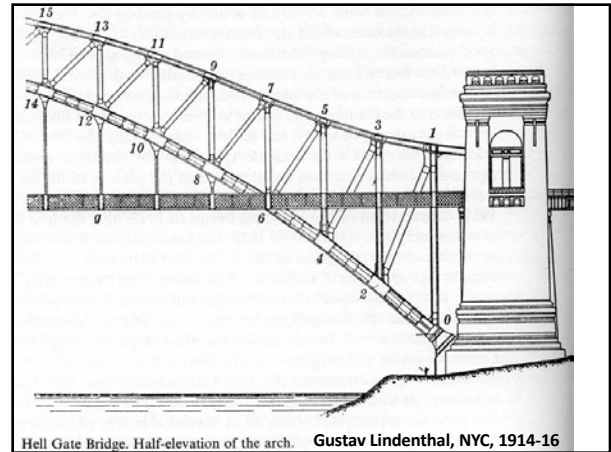


90



Contamin and Dutert, Galerie des Machines, Paris, 1889

91



Hell Gate Bridge. Half-elevation of the arch. Gustav Lindenthal, NYC, 1914-16

92



Vladimir Tatlin, Monument to the Third International, 1919-20

93



Mies van der Rohe, Concert Hall Project, 1942 (Glenn Martin collage); Albert Kahn, Glenn Martin Assembly Building, Baltimore, 1937

94



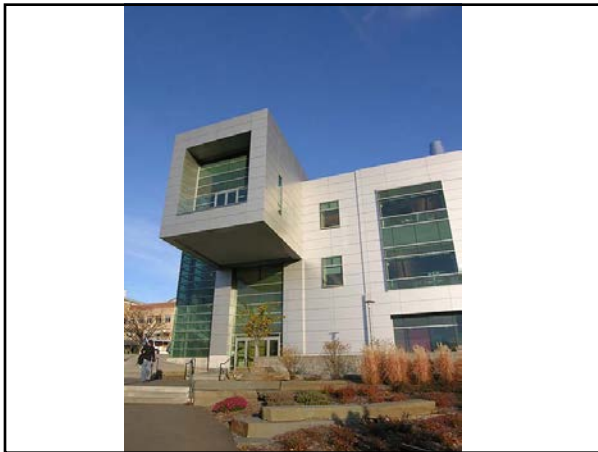
Alvar Aalto, Saynatsalo Town Hall, 1952

95



Zimmer Gunsul Frasca, Duffield Hall, Cornell University, 2004

96



97



<http://www.aap.cornell.edu/milstein/>

98

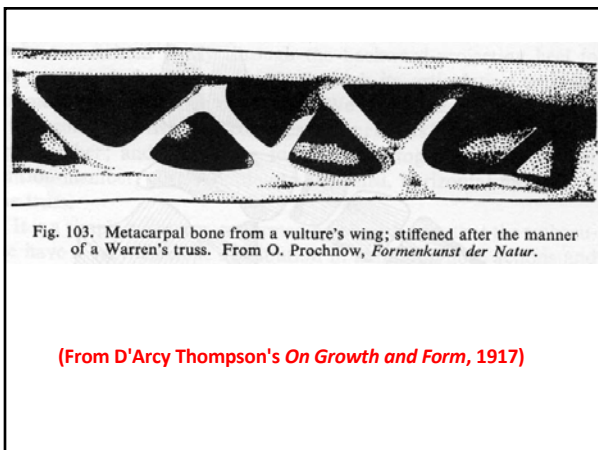


Michael
Hopkins, House,
London, 1977

99



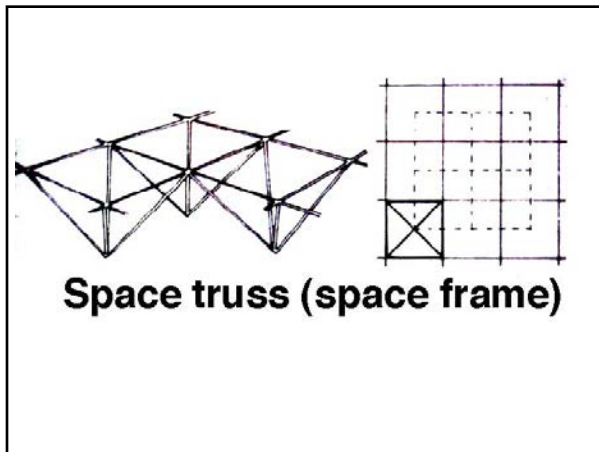
100



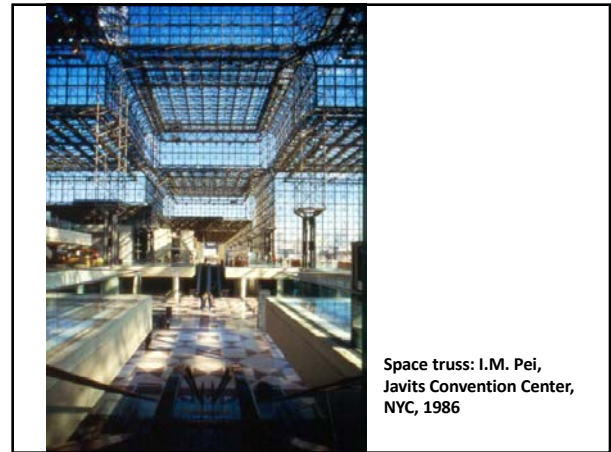
101



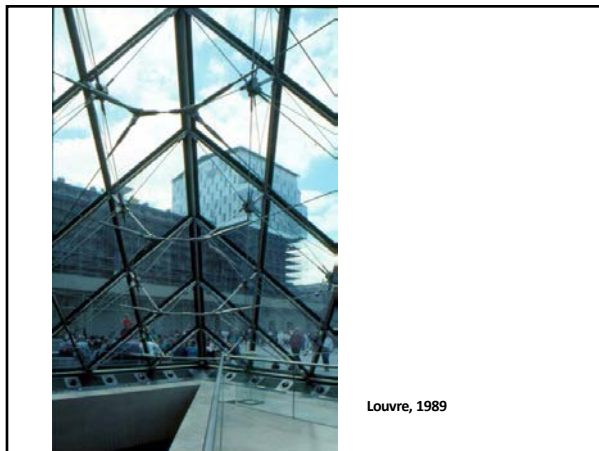
102



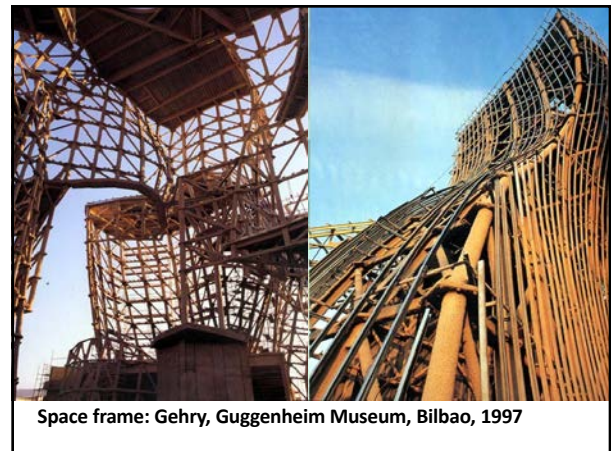
103



104



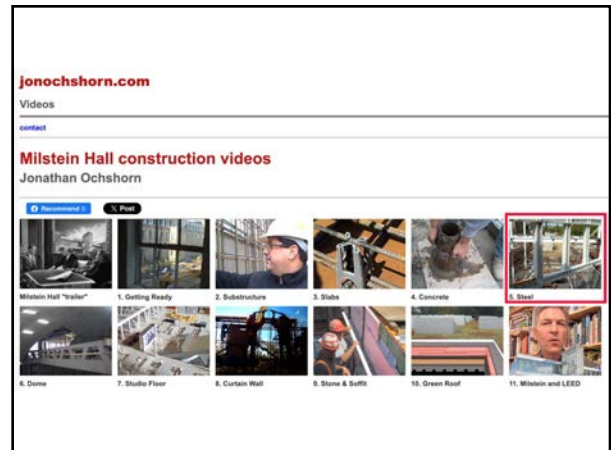
105



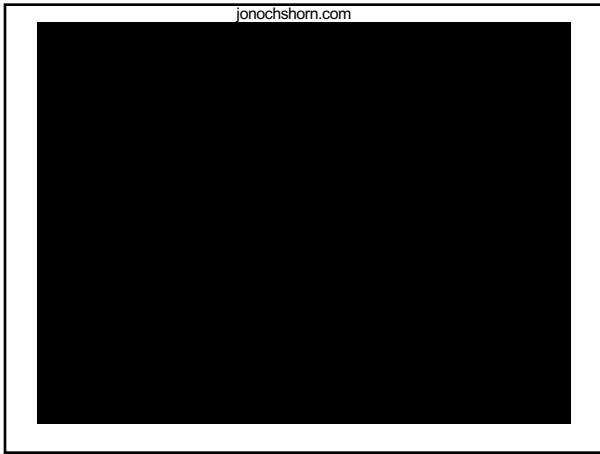
106



107



108



109